



**TRANSPORTATION CABINET**

Frankfort, Kentucky 40622  
www.transportation.ky.gov/

**Steven L. Beshear**  
Governor

**Michael W. Hancock, P.E.**  
Secretary

October 12, 2011

CALL NO. 309  
CONTRACT ID NO. 111343  
ADDENDUM # 1

Subject: Hardin County, JP02 047 NEW-ROUTE  
Letting October 21, 2011

- (1) Revised - Plan Sheets - R2K, R114, R116, R117, R120 & R121
- (2) Revised - Bid Items - Pages 106-113 of 113

Proposal revisions are available at <http://transportation.ky.gov/contract/>.  
Plan revisions are available at <http://www.lynnimaging.com/kytransportation/>.

If you have any questions, please contact us at 502-564-3500.

Sincerely,

A handwritten signature in blue ink that reads "Ryan Griffith".

Ryan Griffith  
Director  
Division of Construction Procurement

RG:ks  
Enclosures



An Equal Opportunity Employer M/F/D


PREPARED BY \_\_\_\_\_ DATE \_\_\_\_\_  
 CHECKED BY \_\_\_\_\_ DATE \_\_\_\_\_  
 APPROVED BY \_\_\_\_\_ DATE \_\_\_\_\_

ITEM CODE	ITEM	UNIT	ELIZABETHTOWN TO RADCLIFF CONNECTOR																TOTAL PROJECT
78	CRUSHED AGGREGATE SIZE NUMBER 2	⑥	TON	95															95
1000	PERFORATED PIPE-4 IN		LIN. FT.	32,751															32,751
1010	NON-PERFORATED PIPE-4 IN		LIN. FT.	4,844															4,844
1020	PERF PIPE HEADWALL TY 1-4 IN		EACH	22															22
1024	PERF PIPE HEADWALL TY 2-4 IN		EACH	5															5
1028	PERF PIPE HEADWALL TY 3-4 IN		EACH	65															65
1032	PERF PIPE HEADWALL TY 4-4 IN		EACH	3															3
1740	CORED HOLE DRAINAGE BOX CON-4 IN		EACH	34															34
1895	VALLEY GUTTER		LIN. FT.	1,041															1,041
1982	DELINEATOR FOR GUARDRAIL - WHITE	④	EACH	10															10
2014	BARRICADE - TYPE III	④	EACH	10															10
2091	REMOVE PAVEMENT		SQ. YD.	670															670
2159	TEMPORARY DITCH		LIN. FT.	14,875															14,875
2160	CLEAN TEMPORARY DITCHES		LIN. FT.	14,875															14,875
2200	ROADWAY EXCAVATION		CU. YD.	⑧															⑧
2223	GRANULAR EMBANKMENT	③	CU. YD.	3,490															3,490
2242	WATER	②	M. GAL.	1															1
2262	FENCE-WOVEN WIRE TYPE I		LIN. FT.	26,500															26,500
21802EN	GUARDRAIL STEEL "W" BEAM SINGLE FACE (7 FT POST)		LIN. FT.	9,443.75															9,443.75
2360	GUARDRAIL TERMINAL SECTION NUMBER 1		EACH	7															7
2369	GUARDRAIL END TREATMENT TYPE 2A		EACH	8															8
2373	GUARDRAIL END TREATMENT TYPE 3		EACH	2															2
2391	GUARDRAIL END TREATMENT TYPE 4A		EACH	6															6
2429	RIGHT-OF-WAY MONUMENT TYPE 1		EACH	204															204
2432	WITNESS POST		EACH	3															3
2475	PLUG WATER WELL		EACH	6															6
2483	CHANNEL LINING CLASS II		TON	1,149															1,149
2484	CHANNEL LINING CLASS III		TON	329															329
2545	CLEARING AND GRUBBING	①	L.S.	1															1
2562	SIGNS	④	SQ. FT.	261															261
2568	MOBILIZATION		L.S.	1															1
2569	DEMOBILIZATION		L.S.	1															1
2585	EDGE KEY		LIN. FT.	173															173
2599	FABRIC-GEOTEXTILE TYPE IV	③	SQ. YD.	5,150															5,150
2600	FABRIC-GEOTEXTILE TYPE IV FOR PIPE	⑨	SQ. YD.	19,546															19,546
2650	MAINTAIN AND CONTROL TRAFFIC		L.S.	1															1
2671	PORTABLE CHANGEABLE MESSAGE SIGN		EACH	2															2
2690	SAFELOADING		CU. YD.	8															8
2701	TEMPORARY SILT FENCE		LIN. FT.	14,875															14,875
2703	SILT TRAP TYPE A		EACH	94															94
2704	SILT TRAP TYPE B		EACH	94															94
2705	SILT TRAP TYPE C		EACH	94															94
2706	CLEAN SILT TRAP TYPE A		EACH	282															282
2707	CLEAN SILT TRAP TYPE B		EACH	282															282
2708	CLEAN SILT TRAP TYPE C		EACH	282															282
2709	CLEAN TEMPORARY SILT FENCE		LIN. FT.	14,875															14,875
2726	STAKING		L.S.	1															1
5950	EROSION CONTROL BLANKET		SQ. YD.	40,285															40,285
5952	TEMPORARY MULCH		SQ. YD.	454,960															454,960
5953	TEMPORARY SEEDING AND PROTECTION	⑤	SQ. YD.	30,492															30,492
5966	TOPDRESSING FERTILIZER		TON	16															16
5985	SEEDING & PROTECTION		SQ. YD.	304,920															304,920
5989	SPECIAL SEEDING CROWN VETCH		SQ. YD.	24,196															24,196
5990	SODDING		SQ. YD.	1,294															1,294
6510	PAVEMENT STRIPING - TEMP PAINT - 4 INCH		LIN. FT.	17,524															17,524
6514	PAVEMENT STRIPING - PERM. PAINT - 4 INCH		LIN. FT.	90,693															90,693
6567	PAVE MARKING-THERMO STOP BAR-12IN		LIN. FT.	232															232
6568	PAVE MARKING-THERMO STOP BAR-24IN		LIN. FT.	96															96
6574	PAVE MARKING-THERMO CURV ARROW		EACH	29															29
23274ENIIF	TURF REINFORCEMENT MAT 1		SQ. YD.	12,527															12,527
2379IEC	PAVE STRIPING-CHEVRON MARKINGS		SQ. FT.	3,956															3,956
23131ER70I	PIPELINE VIDEO INSPECTION		LIN. FT.	2,630															2,630
10203ND	PAVEMENT ADJUSTMENT (ASPHALT)	⑦	L.S.	1															1
10203ND	PAVEMENT ADJUSTMENT (CONCRETE)	⑦	L.S.	1															1

- ① APPROXIMATELY 103 ACRES
- ② ESTIMATED AT 2.125 M. GALLON PER MILE (FOR CONTROLLING DUST CAUSED BY MAINTAINING TRAFFIC ONLY)
- ③ FOR SINKHOLE AND POND BACKFILL (SEE GEOTECH NOTES)
- ④ FOR MAINTENANCE OF TRAFFIC.
- ⑤ ESTIMATED AT 10% OF TOTAL SEEDING & PROTECTION
- ⑥ ESTIMATED AT 1 TON PER PERFORATED PIPE HDWLL
- ⑦ SEE PROPOSAL FOR SPECIAL NOTE ALTERNATE PAVEMENT BID ADJUSTMENT
- ⑧ PAVEMENT EARTHWORK QUANTITIES SEE SHEETS R2L, R2M, AND R2N FOR ALTERNATE
- ⑨ FOR WRAPPING PIPE TRENCH BACKFILL


USER: PEC\_jeff-c  
 DATE: 10/12/2011  
 FILE NAME: R0020K.SU.dgn  
 E-SHEET NAME: R0020K.SU.dgn  
 10/12/2011

GENERAL SUMMARY

 REVISED 10-12-2011

PREPARED BY \_\_\_\_\_ DATE \_\_\_\_\_  
 CHECKED BY \_\_\_\_\_ DATE \_\_\_\_\_  
 APPROVED BY \_\_\_\_\_ DATE \_\_\_\_\_

ITEM CODE	ITEM	UNIT	ELIZABETHTOWN TO RADCLIFF CONNECTOR																TOTAL PROJECT
78	CRUSHED AGGREGATE SIZE NUMBER 2	⑥	TON	95															95
1000	PERFORATED PIPE-4 IN		LIN. FT.	32,751															32,751
1010	NON-PERFORATED PIPE-4 IN		LIN. FT.	4,844															4,844
1020	PERF PIPE HEADWALL TY 1-4 IN		EACH	22															22
1024	PERF PIPE HEADWALL TY 2-4 IN		EACH	5															5
1028	PERF PIPE HEADWALL TY 3-4 IN		EACH	65															65
1032	PERF PIPE HEADWALL TY 4-4 IN		EACH	3															3
1740	CORED HOLE DRAINAGE BOX CON-4 IN		EACH	34															34
1895	VALLEY GUTTER		LIN. FT.	1,041															1,041
1982	DELINEATOR FOR GUARDRAIL - WHITE	④	EACH	10															10
2014	BARRICADE - TYPE III	④	EACH	10															10
2091	REMOVE PAVEMENT		SQ. YD.	670															670
2159	TEMPORARY DITCH		LIN. FT.	14,875															14,875
2160	CLEAN TEMPORARY DITCHES		LIN. FT.	14,875															14,875
2200	ROADWAY EXCAVATION		CU. YD.	⑧															⑧
2223	GRANULAR EMBANKMENT	③	CU. YD.	3,490															3,490
2242	WATER	②	M. GAL.	1															1
2262	FENCE-WOVEN WIRE TYPE I		LIN. FT.	26,500															26,500
21802EN	GUARDRAIL STEEL "W" BEAM SINGLE FACE (7 FT POST)		LIN. FT.	9,443.75															9,443.75
2360	GUARDRAIL TERMINAL SECTION NUMBER 1		EACH	7															7
2369	GUARDRAIL END TREATMENT TYPE 2A		EACH	8															8
2373	GUARDRAIL END TREATMENT TYPE 3		EACH	2															2
2391	GUARDRAIL END TREATMENT TYPE 4A		EACH	6															6
2429	RIGHT-OF-WAY MONUMENT TYPE 1		EACH	204															204
2432	WITNESS POST		EACH	3															3
2475	PLUG WATER WELL		EACH	6															6
2483	CHANNEL LINING CLASS II		TON	1,149															1,149
2484	CHANNEL LINING CLASS III		TON	329															329
2545	CLEARING AND GRUBBING	①	L.S.	1															1
2562	SIGNS	④	SQ. FT.	261															261
2568	MOBILIZATION		L.S.	1															1
2569	DEMOBILIZATION		L.S.	1															1
2585	EDGE KEY		LIN. FT.	173															173
2599	FABRIC-GEOTEXTILE TYPE IV	③	SQ. YD.	5,150															5,150
2600	FABRIC-GEOTEXTILE TYPE IV FOR PIPE	⑨	SQ. YD.	19,546															19,546
2650	MAINTAIN AND CONTROL TRAFFIC		L.S.	1															1
2671	PORTABLE CHANGEABLE MESSAGE SIGN		EACH	2															2
2690	SAFELOADING		CU. YD.	8															8
2701	TEMPORARY SILT FENCE		LIN. FT.	14,875															14,875
2703	SILT TRAP TYPE A		EACH	94															94
2704	SILT TRAP TYPE B		EACH	94															94
2705	SILT TRAP TYPE C		EACH	94															94
2706	CLEAN SILT TRAP TYPE A		EACH	282															282
2707	CLEAN SILT TRAP TYPE B		EACH	282															282
2708	CLEAN SILT TRAP TYPE C		EACH	282															282
2709	CLEAN TEMPORARY SILT FENCE		LIN. FT.	14,875															14,875
2726	STAKING		L.S.	1															1
5950	EROSION CONTROL BLANKET		SQ. YD.	40,285															40,285
5952	TEMPORARY MULCH		SQ. YD.	454,960															454,960
5953	TEMPORARY SEEDING AND PROTECTION	⑤	SQ. YD.	30,492															30,492
5966	TOPDRESSING FERTILIZER		TON	16															16
5985	SEEDING & PROTECTION		SQ. YD.	304,920															304,920
5989	SPECIAL SEEDING CROWN VETCH		SQ. YD.	24,196															24,196
5990	SODDING		SQ. YD.	1,294															1,294
6510	PAVEMENT STRIPING - TEMP PAINT - 4 INCH		LIN. FT.	17,524															17,524
6514	PAVEMENT STRIPING - PERM. PAINT - 4 INCH		LIN. FT.	90,693															90,693
6567	PAVE MARKING-THERMO STOP BAR-12IN		LIN. FT.	232															232
6568	PAVE MARKING-THERMO STOP BAR-24IN		LIN. FT.	96															96
6574	PAVE MARKING-THERMO CURV ARROW		EACH	29															29
23274ENIF	TURF REINFORCEMENT MAT 1		SQ. YD.	12,527															12,527
2379IEC	PAVE STRIPING-CHEVRON MARKINGS		SQ. FT.	3,956															3,956
23131ER70I	PIPELINE VIDEO INSPECTION		LIN. FT.	2,630															2,630
10203ND	PAVEMENT ADJUSTMENT (ASPHALT)	⑦	L.S.	1															1
10203ND	PAVEMENT ADJUSTMENT (CONCRETE)	⑧	L.S.	1															1

 **REMOVED BID ITEM 2714 (SHOULDERING)**

- ① APPROXIMATELY 103 ACRES
- ② ESTIMATED AT 2.125 M. GALLON PER MILE (FOR CONTROLLING DUST CAUSED BY MAINTAINING TRAFFIC ONLY)
- ③ FOR SINKHOLE AND POND BACKFILL (SEE GEOTECH NOTES)
- ④ FOR MAINTENANCE OF TRAFFIC.
- ⑤ ESTIMATED AT 10% OF TOTAL SEEDING & PROTECTION
- ⑥ ESTIMATED AT 1 TON PER PERFORATED PIPE HDWLL
- ⑦ SEE PROPOSAL FOR SPECIAL NOTE ALTERNATE PAVEMENT BID ADJUSTMENT
- ⑧ PAVEMENT EARTHWORK QUANTITIES SEE SHEETS R2L, R2M, AND R2N FOR ALTERNATE
- ⑨ FOR WRAPPING PIPE TRENCH BACKFILL

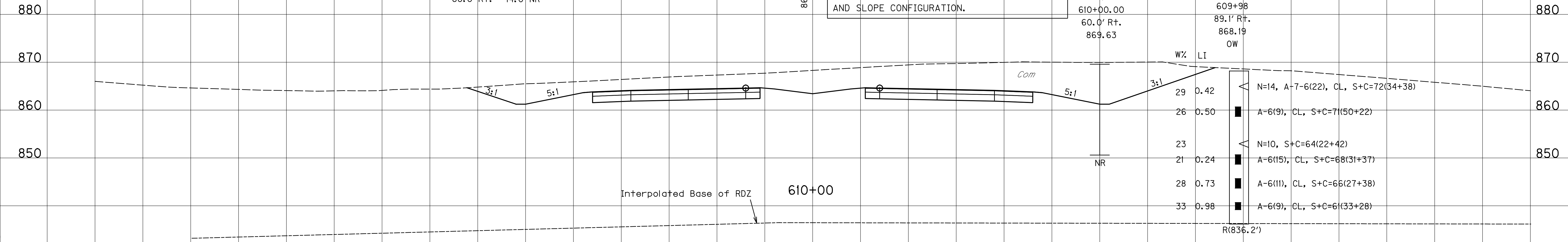
GENERAL SUMMARY

PREPARED BY \_\_\_\_\_ DATE \_\_\_\_\_  
 CHECKED BY \_\_\_\_\_ DATE \_\_\_\_\_  
 APPROVED BY \_\_\_\_\_ DATE \_\_\_\_\_

Additional Rockline		Sounding Information	
Hole No.	Station	Offset	Depth to Refusal
44	609+00.00	60.0' Rt.	11.0' NR
45	611+00.00	60.0' Rt.	14.0' NR

Cut Limits from Sta. 608+00 to Sta. 614+50

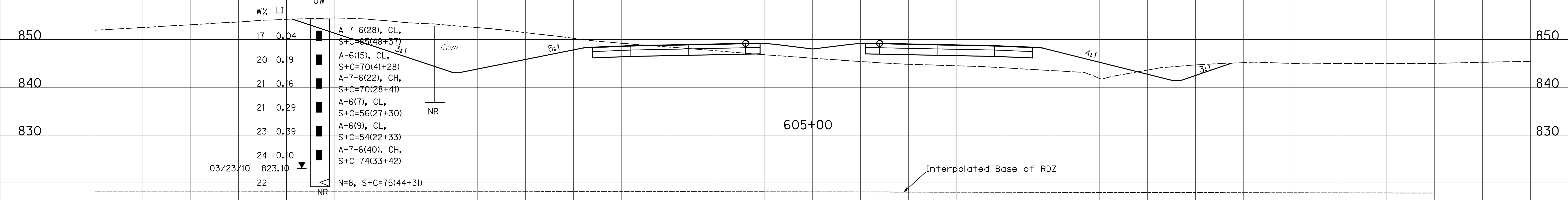
NOTE : NO STABILITY ANALYSIS DEEMED NECESSARY DUE TO SUBSURFACE CONDITIONS AND SLOPE CONFIGURATION.



Additional Rockline		Sounding Information	
Hole No.	Station	Offset	Depth to Refusal
3A	604+96	103' Lt.	854.30
3	605+00.00	79.0' Lt.	852.82

Cut Limits from Sta. 603+00 to Sta. 608+00

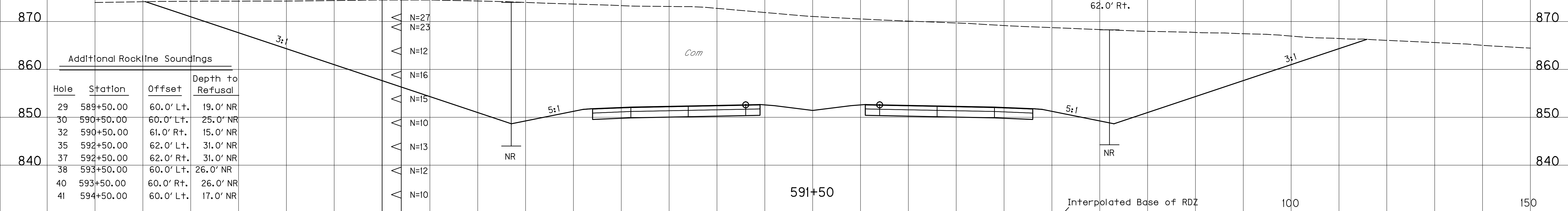
NOTE : NO STABILITY ANALYSIS DEEMED NECESSARY DUE TO SUBSURFACE CONDITIONS AND SLOPE CONFIGURATION.



Additional Rockline		Sounding Information	
Hole No.	Station	Offset	Depth to Refusal
2A	591+50	88.0' Lt.	874.60
2	591+50	63.0' Lt.	874.09

Cut Limits from Sta. 581+00 to Sta. 596+00

NOTE : NO STABILITY ANALYSIS DEEMED NECESSARY DUE TO SUBSURFACE CONDITIONS AND SLOPE CONFIGURATION.



Additional Rockline Soundings			
Hole	Station	Offset	Depth to Refusal
29	589+50.00	60.0' Lt.	19.0' NR
30	590+50.00	60.0' Lt.	25.0' NR
32	590+50.00	61.0' Rt.	15.0' NR
35	592+50.00	62.0' Lt.	31.0' NR
37	592+50.00	62.0' Rt.	31.0' NR
38	593+50.00	60.0' Lt.	26.0' NR
40	593+50.00	60.0' Rt.	26.0' NR
41	594+50.00	60.0' Lt.	17.0' NR

CUT STABILITY SECTION  
 Ceciliaana Dr. to KY 220 (Section 2)  
 STA. 591+50, 605+00 & 610+00



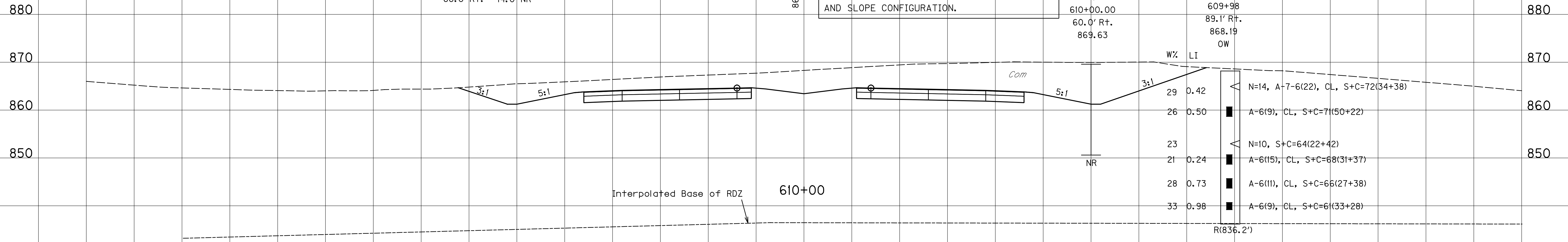
REVISD 10-12-2011

Cut Limits from Sta. 608+00 to Sta. 614+50

NOTE : NO STABILITY ANALYSIS DEEMED NECESSARY DUE TO SUBSURFACE CONDITIONS AND SLOPE CONFIGURATION.

Additional Rockline		Sounding Information	
Hole No.	Station	Offset	Depth to Refusal
44	609+00.00	60.0' Rt.	11.0' NR
45	611+00.00	60.0' Rt.	14.0' NR

W%	LI	
29	0.42	N=14, A=7-6(22), CL, S+C=72(34+38)
26	0.50	A-6(9), CL, S+C=71(50+22)
23		N=10, S+C=64(22+42)
21	0.24	A-6(15), CL, S+C=68(31+37)
28	0.73	A-6(11), CL, S+C=66(27+38)
33	0.98	A-6(9), CL, S+C=6(33+28)

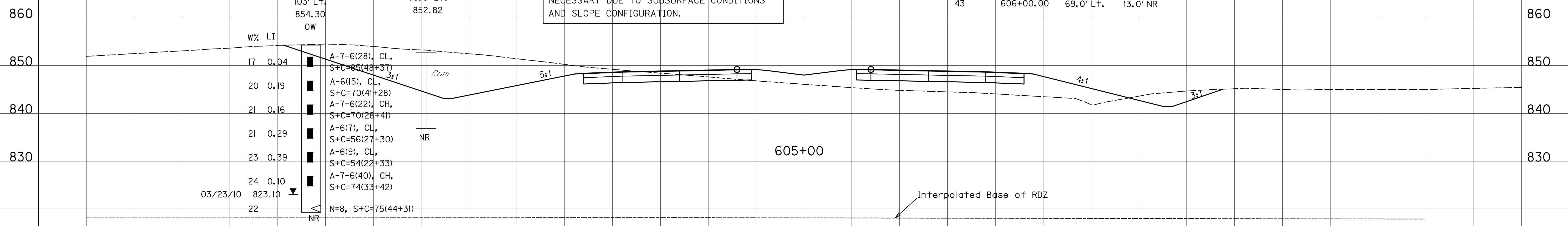


Cut Limits from Sta. 603+00 to Sta. 608+00

NOTE : NO STABILITY ANALYSIS DEEMED NECESSARY DUE TO SUBSURFACE CONDITIONS AND SLOPE CONFIGURATION.

Additional Rockline		Sounding Information	
Hole No.	Station	Offset	Depth to Refusal
43	606+00.00	69.0' Lt.	13.0' NR

W%	LI	
17	0.04	A-7-6(28), CL, S+C=85(48+37)
20	0.19	A-6(15), CL, S+C=70(41+28)
21	0.16	A-7-6(22), CH, S+C=70(28+41)
21	0.29	A-6(7), CL, S+C=56(27+30)
23	0.39	A-6(9), CL, S+C=54(22+33)
24	0.10	A-7-6(40), CH, S+C=74(33+42)
22		N=8, S+C=75(44+31)



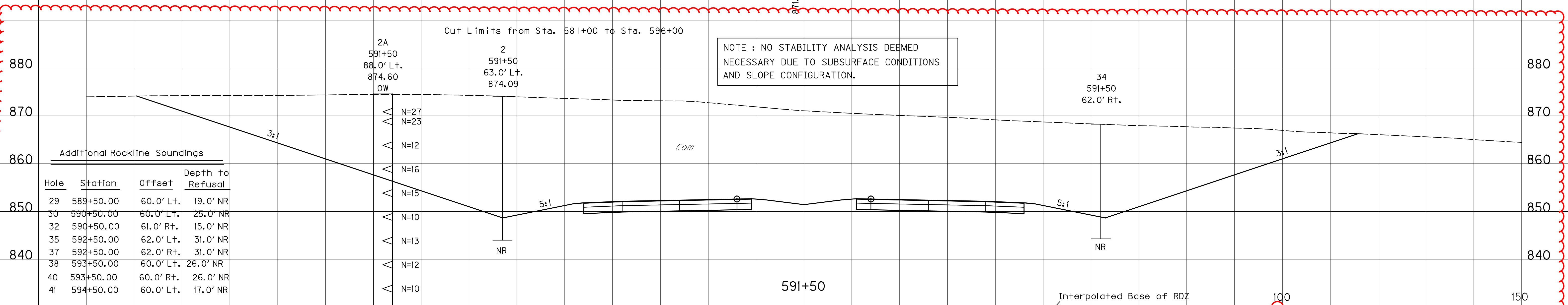
Cut Limits from Sta. 581+00 to Sta. 596+00

NOTE : NO STABILITY ANALYSIS DEEMED NECESSARY DUE TO SUBSURFACE CONDITIONS AND SLOPE CONFIGURATION.

Additional Rockline Soundings			
Hole	Station	Offset	Depth to Refusal
29	589+50.00	60.0' Lt.	19.0' NR
30	590+50.00	60.0' Lt.	25.0' NR
32	590+50.00	61.0' Rt.	15.0' NR
35	592+50.00	62.0' Lt.	31.0' NR
37	592+50.00	62.0' Rt.	31.0' NR
38	593+50.00	60.0' Lt.	26.0' NR
40	593+50.00	60.0' Rt.	26.0' NR
41	594+50.00	60.0' Lt.	17.0' NR

Additional Rockline		Sounding Information	
Hole No.	Station	Offset	Depth to Refusal
2A	591+50	88.0' Lt.	874.60
2	591+50	63.0' Lt.	874.09

34	591+50	62.0' Rt.	
----	--------	-----------	--



CUT STABILITY SECTION  
Cecilliana Dr. to KY 220 (Section 2)  
STA. 591+50, 605+00 & 610+00

PREPARED BY \_\_\_\_\_ DATE \_\_\_\_\_  
CHECKED BY \_\_\_\_\_ DATE \_\_\_\_\_  
APPROVED BY \_\_\_\_\_ DATE \_\_\_\_\_

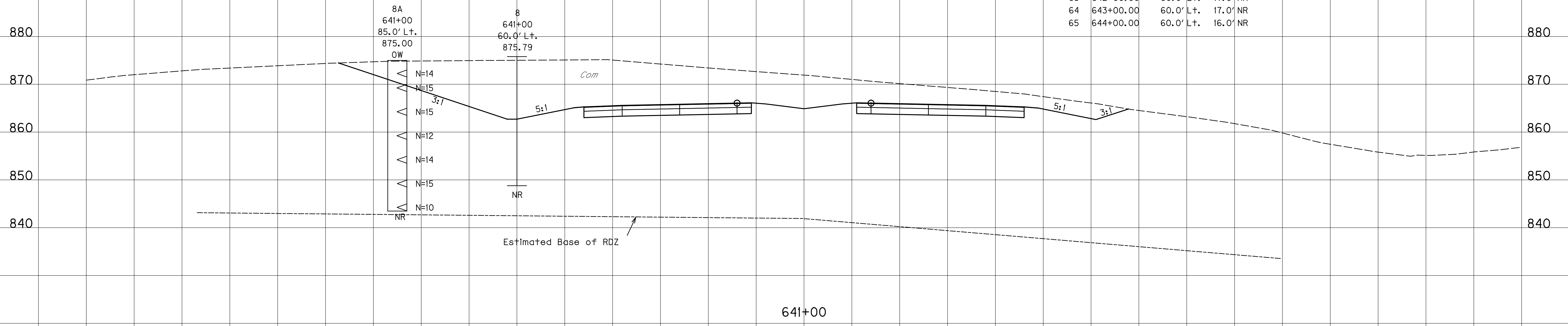
USER: PEC.Jeff-C  
DATE: 10/12/2011  
FILE NAME: RI1400GT.dgn  
E-SHEET NAME: RI1400GT.dgn

PREPARED BY \_\_\_\_\_ DATE \_\_\_\_\_  
 CHECKED BY \_\_\_\_\_ DATE \_\_\_\_\_  
 APPROVED BY \_\_\_\_\_ DATE \_\_\_\_\_

Cut Limits from Sta. 637+50 to Sta. 645+00

NOTE : NO STABILITY ANALYSIS DEEMED NECESSARY DUE TO SUBSURFACE CONDITIONS AND SLOPE CONFIGURATION.

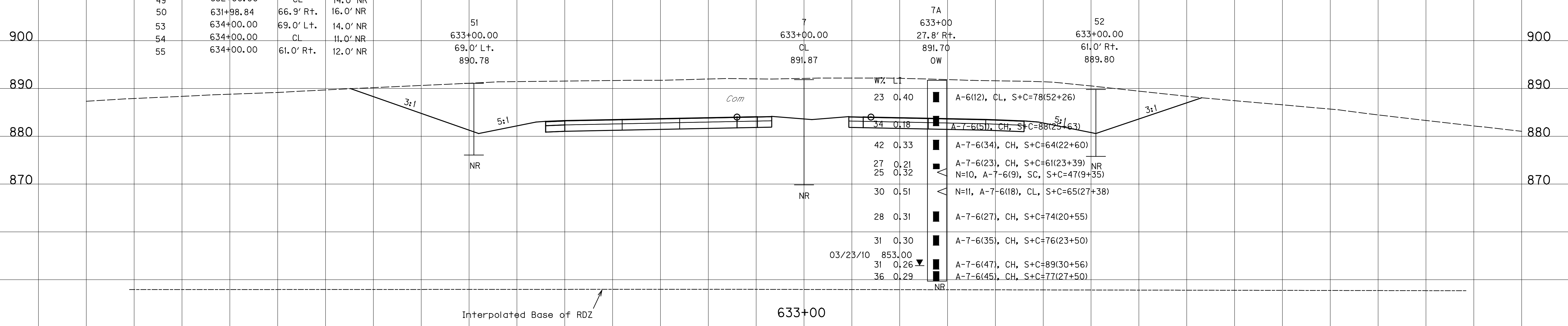
Additional Rockline Soundings			
Hole	Station	Offset	Depth to Refusal
56	639+00.00	60.0' Lt.	15.0' NR
58	639+00.00	70.0' Rt.	14.0' NR
59	640+00.00	60.0' Lt.	16.0' NR
61	640+00.00	61.0' Rt.	13.0' NR
63	642+00.00	60.0' Lt.	17.0' NR
64	643+00.00	60.0' Lt.	17.0' NR
65	644+00.00	60.0' Lt.	16.0' NR



Additional Rockline Sounding Information			
Hole No.	Station	Offset	Depth to Refusal
49	632+00.00	CL	14.0' NR
50	631+98.84	66.9' Rt.	16.0' NR
53	634+00.00	69.0' Lt.	14.0' NR
54	634+00.00	CL	11.0' NR
55	634+00.00	61.0' Rt.	12.0' NR

Cut Limits from Sta. 631+00 to Sta. 636+00

NOTE : NO STABILITY ANALYSIS DEEMED NECESSARY DUE TO SUBSURFACE CONDITIONS AND SLOPE CONFIGURATION.



W/L	Station	Offset	Depth to Refusal	Notes
23	0.40			A-6(12), CL, S+C=78(52+26)
34	0.18			A-7-6(5), CH, S+C=88(25+63)
42	0.33			A-7-6(34), CH, S+C=64(22+60)
27	0.21			A-7-6(23), CH, S+C=61(23+39)
25	0.32			N=10, A-7-6(9), SC, S+C=47(9+35)
30	0.51			N=11, A-7-6(18), CL, S+C=65(27+38)
28	0.31			A-7-6(27), CH, S+C=74(20+55)
31	0.30			A-7-6(35), CH, S+C=76(23+50)
03/23/10	853.00			
31	0.26			A-7-6(47), CH, S+C=89(30+56)
36	0.29			A-7-6(45), CH, S+C=77(27+50)

USER: PEC\_jeff-c  
 DATE: 10/12/2011  
 FILE NAME: R11600GT.dgn  
 E-SHEET NAME: R11600GT.dgn

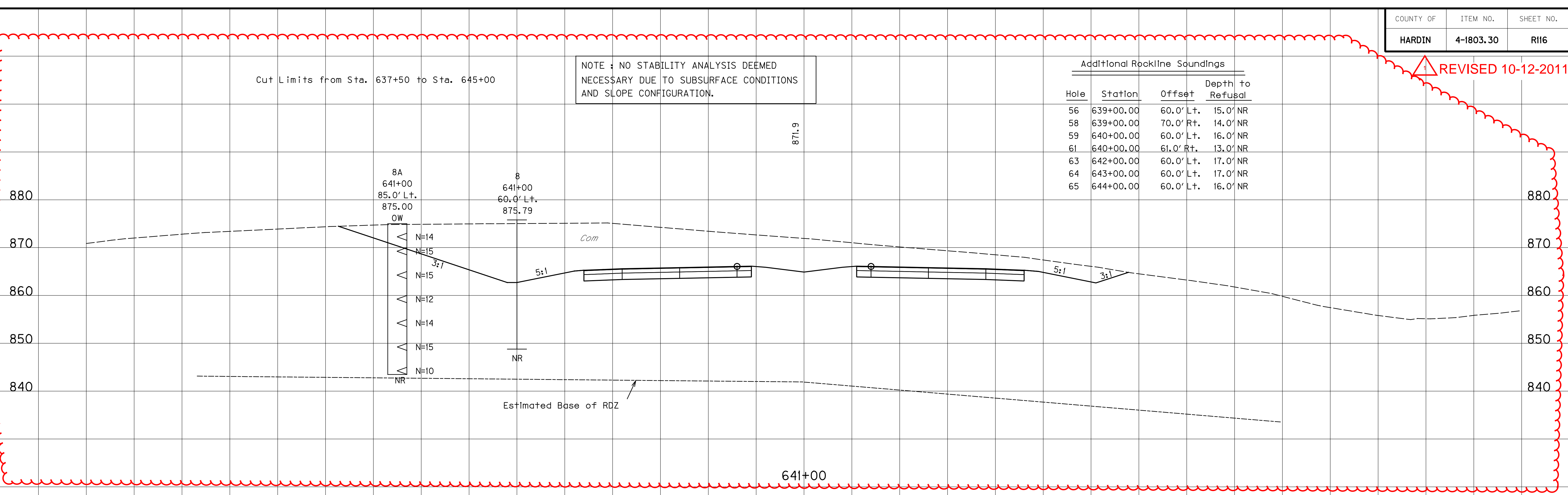
REVISED 10-12-2011

NOTE : NO STABILITY ANALYSIS DEEMED NECESSARY DUE TO SUBSURFACE CONDITIONS AND SLOPE CONFIGURATION.

Additional Rockline Soundings

Hole	Station	Offset	Depth to Refusal
56	639+00.00	60.0' Lt.	15.0' NR
58	639+00.00	70.0' Rt.	14.0' NR
59	640+00.00	60.0' Lt.	16.0' NR
61	640+00.00	61.0' Rt.	13.0' NR
63	642+00.00	60.0' Lt.	17.0' NR
64	643+00.00	60.0' Lt.	17.0' NR
65	644+00.00	60.0' Lt.	16.0' NR

Cut Limits from Sta. 637+50 to Sta. 645+00



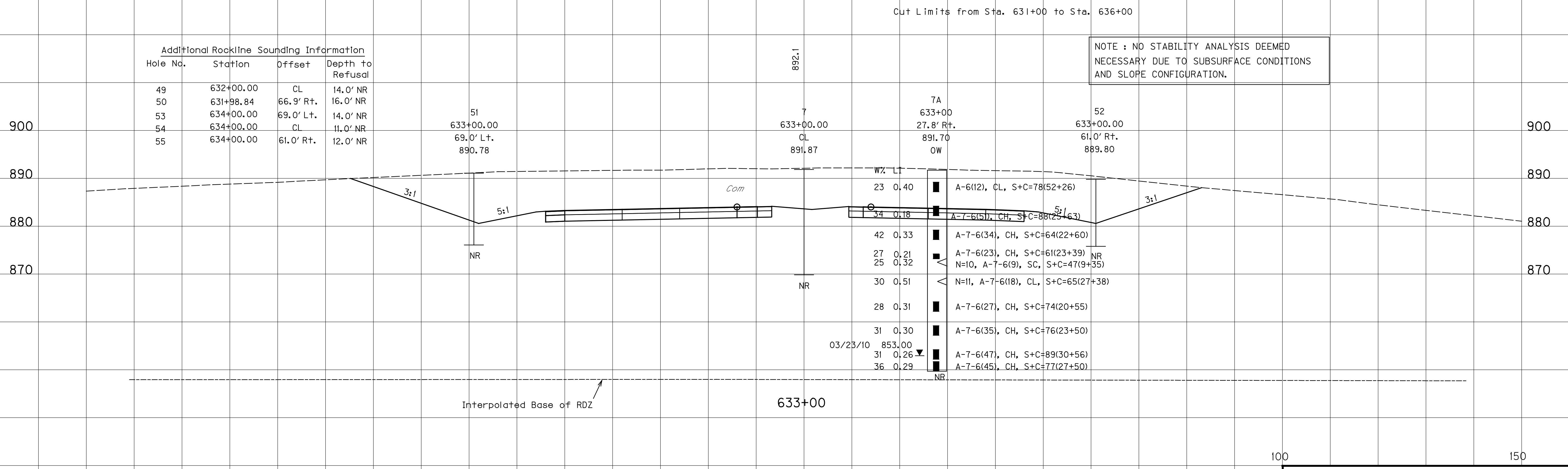
PREPARED BY \_\_\_\_\_ DATE \_\_\_\_\_  
 CHECKED BY \_\_\_\_\_ DATE \_\_\_\_\_  
 APPROVED BY \_\_\_\_\_ DATE \_\_\_\_\_

Cut Limits from Sta. 631+00 to Sta. 636+00

NOTE : NO STABILITY ANALYSIS DEEMED NECESSARY DUE TO SUBSURFACE CONDITIONS AND SLOPE CONFIGURATION.

Additional Rockline Sounding Information

Hole No.	Station	Offset	Depth to Refusal
49	632+00.00	CL	14.0' NR
50	631+98.84	66.9' Rt.	16.0' NR
53	634+00.00	69.0' Lt.	14.0' NR
54	634+00.00	CL	11.0' NR
55	634+00.00	61.0' Rt.	12.0' NR

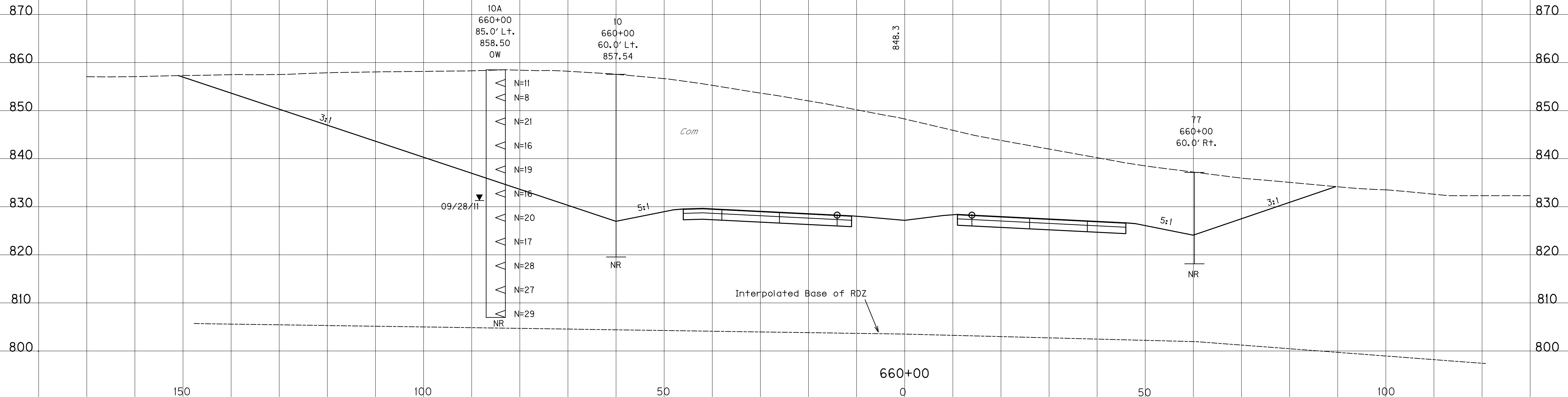


W/L	Depth	Description
23	0.40	A-6(12), CL, S+C=78(52+26)
34	0.18	A-7-6(5), CH, S+C=88(25+63)
42	0.33	A-7-6(34), CH, S+C=64(22+60)
27	0.21	A-7-6(23), CH, S+C=61(23+39)
25	0.32	N=10, A-7-6(9), SC, S+C=47(9+35)
30	0.51	N=11, A-7-6(18), CL, S+C=65(27+38)
28	0.31	A-7-6(27), CH, S+C=74(20+55)
31	0.30	A-7-6(35), CH, S+C=76(23+50)
03/23/10	853.00	
31	0.26	A-7-6(47), CH, S+C=89(30+56)
36	0.29	A-7-6(45), CH, S+C=77(27+50)

USER: PEC\_jeff-c  
 DATE: 10/12/2011  
 FILE NAME: RI1600GT.dgn  
 E-SHEET NAME: RI1600GT.dgn

NOTE : NO STABILITY ANALYSIS DEEMED NECESSARY DUE TO SUBSURFACE CONDITIONS AND SLOPE CONFIGURATION.

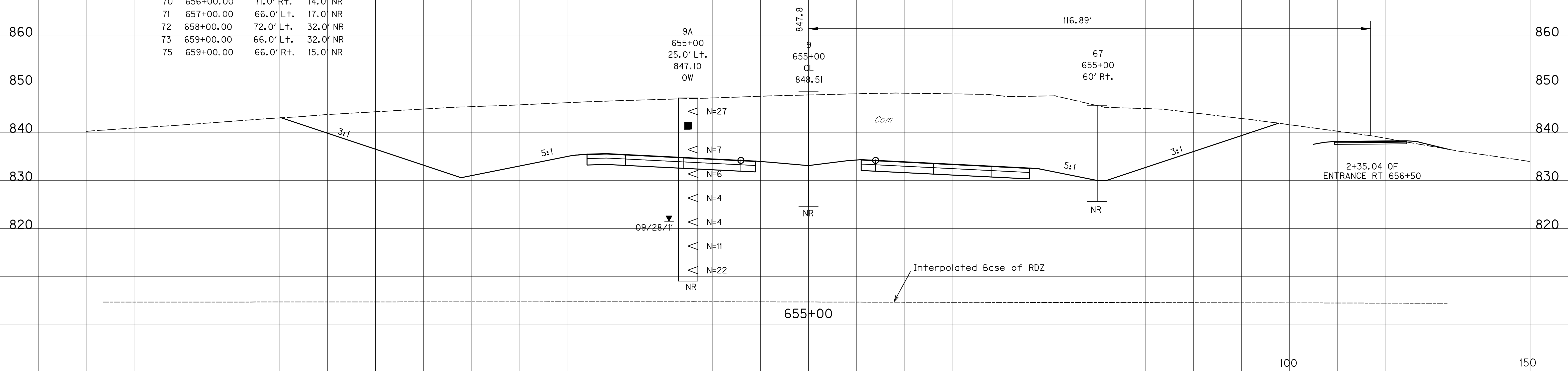
PREPARED BY \_\_\_\_\_ DATE \_\_\_\_\_  
 CHECKED BY \_\_\_\_\_ DATE \_\_\_\_\_  
 APPROVED BY \_\_\_\_\_ DATE \_\_\_\_\_



Additional Rockline Soundings

Hole	Station	Offset	Depth to Refusal
66	654+00.00	60.0' Rt.	16.0' NR
68	656+00.00	61.0' Lt.	22.0' NR
70	656+00.00	71.0' Rt.	14.0' NR
71	657+00.00	66.0' Lt.	17.0' NR
72	658+00.00	72.0' Lt.	32.0' NR
73	659+00.00	66.0' Lt.	32.0' NR
75	659+00.00	66.0' Rt.	15.0' NR

NOTE : NO STABILITY ANALYSIS DEEMED NECESSARY DUE TO SUBSURFACE CONDITIONS AND SLOPE CONFIGURATION.



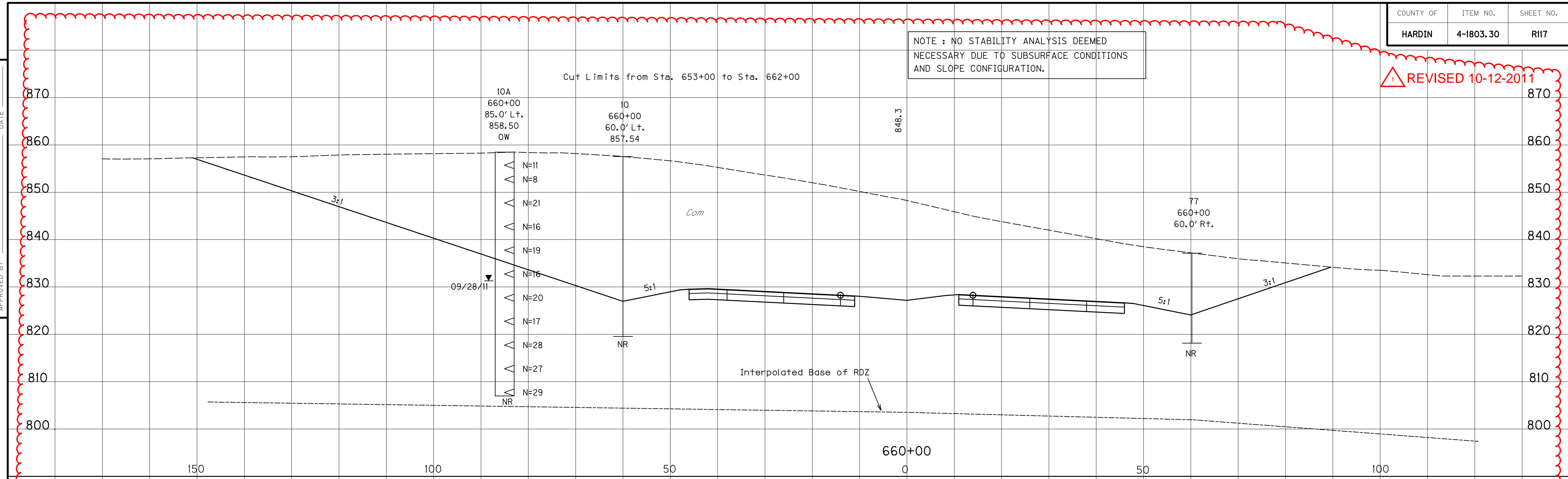
CUT STABILITY SECTION  
 Ceciliaana Dr. to KY 220 (Section 2)  
 STA. 655+00 to 660+00



NOTE : NO STABILITY ANALYSIS DEEMED NECESSARY DUE TO SUBSURFACE CONDITIONS AND SLOPE CONFIGURATION.

REVIS 10-12-2011

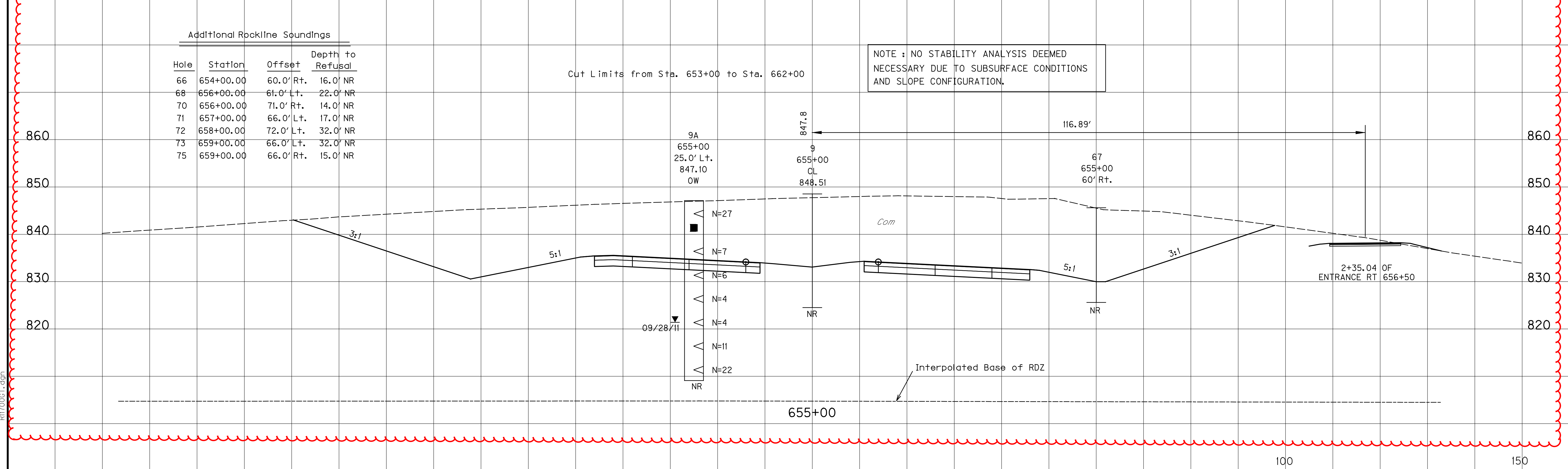
PREPARED BY \_\_\_\_\_ DATE \_\_\_\_\_  
 CHECKED BY \_\_\_\_\_ DATE \_\_\_\_\_  
 APPROVED BY \_\_\_\_\_ DATE \_\_\_\_\_



Additional Rockline Soundings

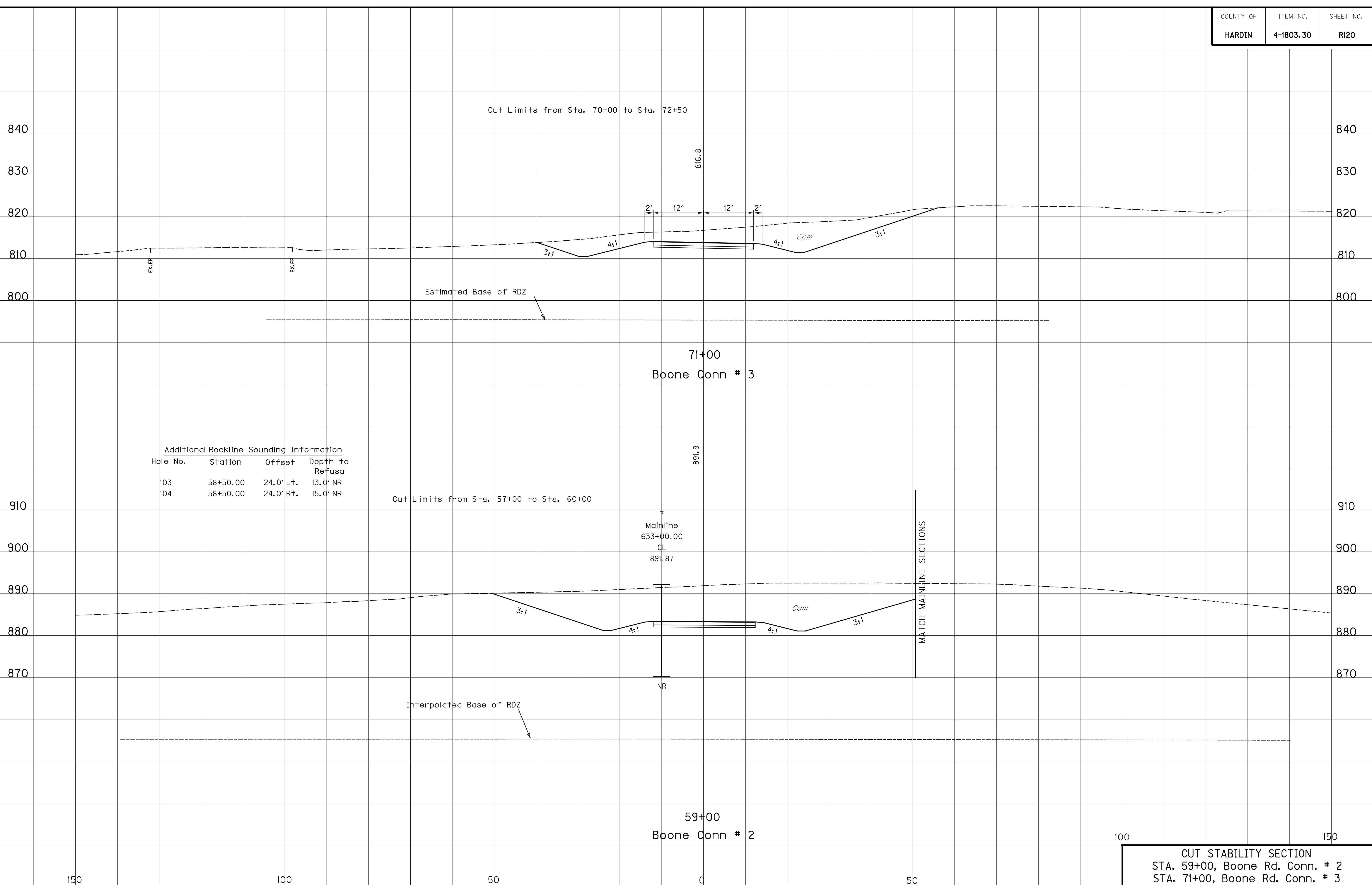
Hole	Station	Offset	Depth to Refusal
66	654+00.00	60.0' Rt.	16.0' NR
68	656+00.00	61.0' Lt.	22.0' NR
70	656+00.00	71.0' Rt.	14.0' NR
72	658+00.00	72.0' Lt.	32.0' NR
73	659+00.00	66.0' Lt.	32.0' NR
75	659+00.00	66.0' Rt.	15.0' NR

NOTE : NO STABILITY ANALYSIS DEEMED NECESSARY DUE TO SUBSURFACE CONDITIONS AND SLOPE CONFIGURATION.



USER: PEC.Jeff-C  
 DATE: 10/12/2011  
 FILE NAME: RI1700GT.dgn  
 E-SHEET NAME: RI1700GT.dgn  
 10/12/2011

PREPARED BY \_\_\_\_\_ DATE \_\_\_\_\_  
 CHECKED BY \_\_\_\_\_ DATE \_\_\_\_\_  
 APPROVED BY \_\_\_\_\_ DATE \_\_\_\_\_

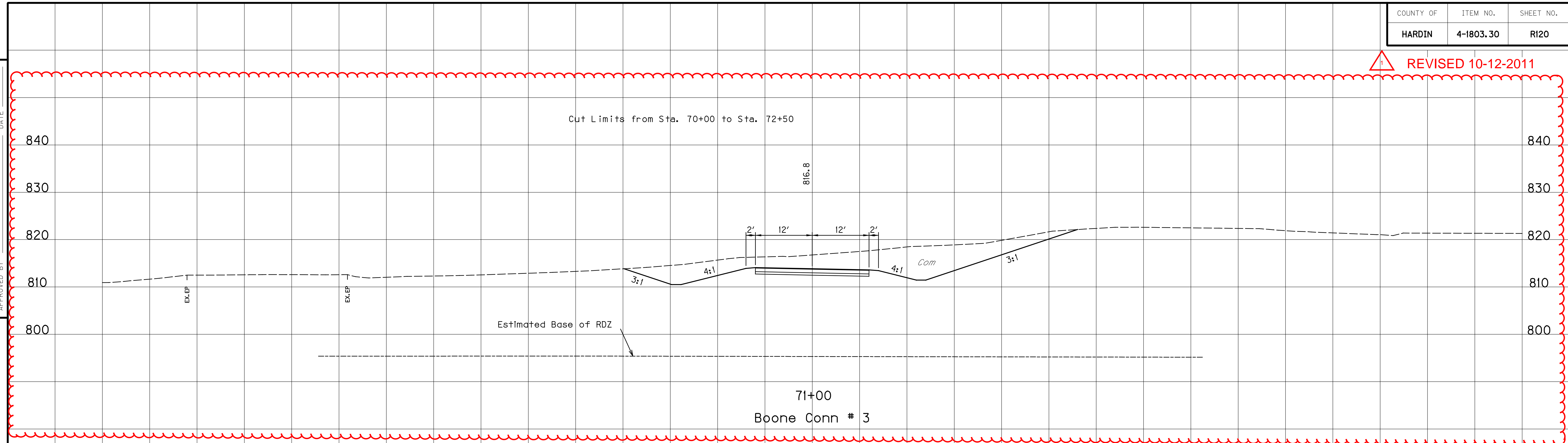


USER: PEC\_Jeff-C  
 DATE: 10/12/2011  
 FILE NAME: R120006T.dgn  
 E-SHEET NAME: R120006T.dgn  
 10/12/2011

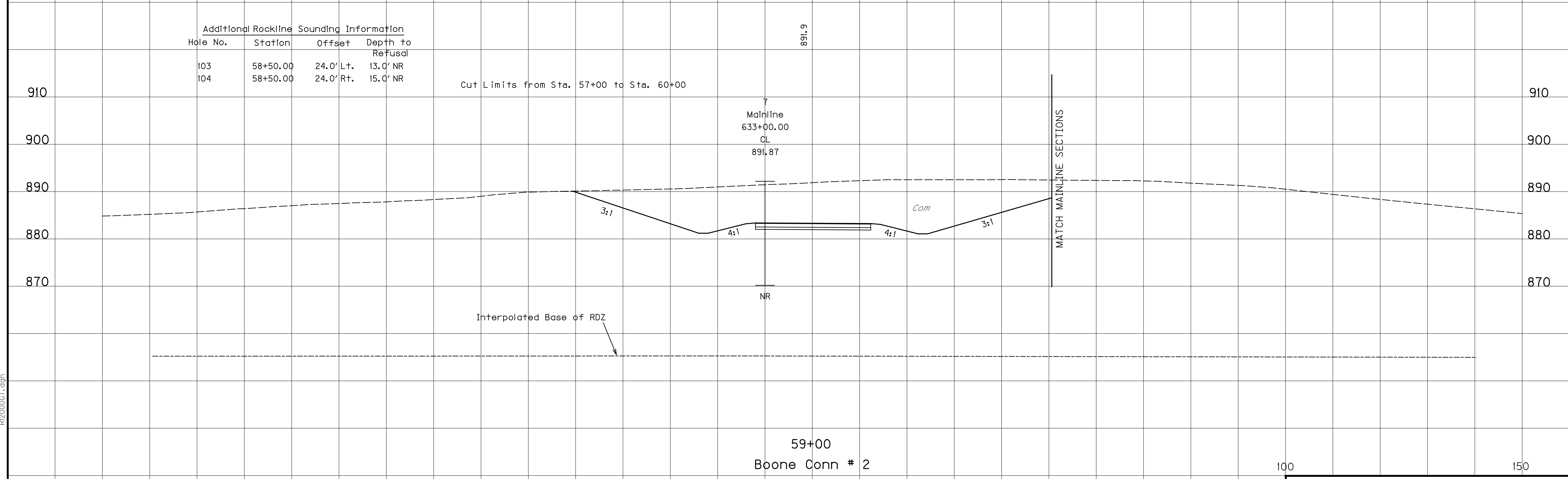
REVISD 10-12-2011

PREPARED BY \_\_\_\_\_ DATE \_\_\_\_\_  
 CHECKED BY \_\_\_\_\_ DATE \_\_\_\_\_  
 APPROVED BY \_\_\_\_\_ DATE \_\_\_\_\_

1



Additional Rockline Sounding Information			
Hole No.	Station	Offset	Depth to Refusal
103	58+50.00	24.0' Lt.	13.0' NR
104	58+50.00	24.0' Rt.	15.0' NR



USER: PEC\_jeff-c  
 DATE: 10/12/2011  
 FILE NAME: R120006T.dgn  
 E-SHEET NAME: R120006T.dgn  
 10/12/2011

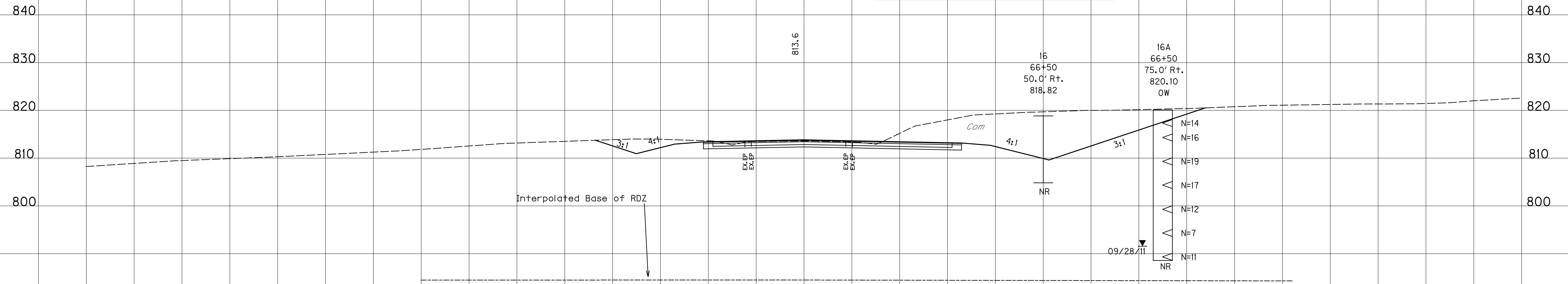
100 150

CUT STABILITY SECTION  
 STA. 59+00, Boone Rd. Conn. # 2  
 STA. 71+00, Boone Rd. Conn. # 3

PREPARED BY \_\_\_\_\_ DATE \_\_\_\_\_  
 CHECKED BY \_\_\_\_\_ DATE \_\_\_\_\_  
 APPROVED BY \_\_\_\_\_ DATE \_\_\_\_\_

Cut Limits from Sta. 65+50 to Sta. 68+00

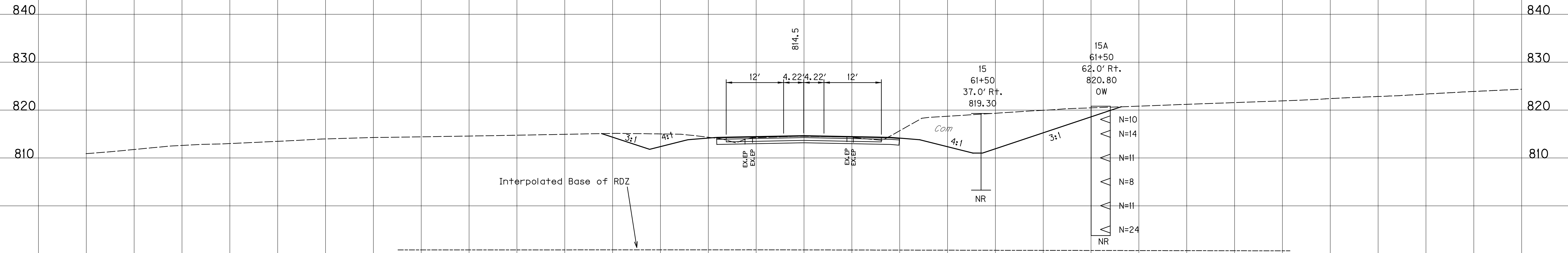
NOTE : NO STABILITY ANALYSIS DEEMED  
NECESSARY DUE TO SUBSURFACE CONDITIONS  
AND SLOPE CONFIGURATION.



66+50

Cut Limits from Sta. 60+50 to Sta. 63+00

NOTE : NO STABILITY ANALYSIS DEEMED  
NECESSARY DUE TO SUBSURFACE CONDITIONS  
AND SLOPE CONFIGURATION.



61+50

USER: PEC.Jeff-C  
 DATE: 10/12/2011  
 FILE NAME: R12100GT.dgn  
 E-SHEET NAME: R12100GT.dgn

100 150

CUT STABILITY SECTION, KY 220  
STA. 61+50 & 66+50

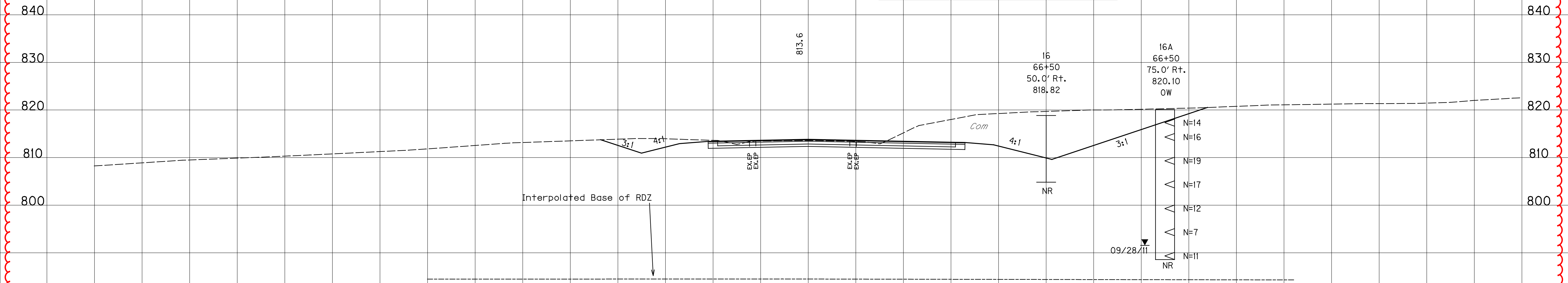


REVIS 10-12-2011

PREPARED BY \_\_\_\_\_ DATE \_\_\_\_\_  
 CHECKED BY \_\_\_\_\_ DATE \_\_\_\_\_  
 APPROVED BY \_\_\_\_\_ DATE \_\_\_\_\_

Cut Limits from Sta. 65+50 to Sta. 68+00

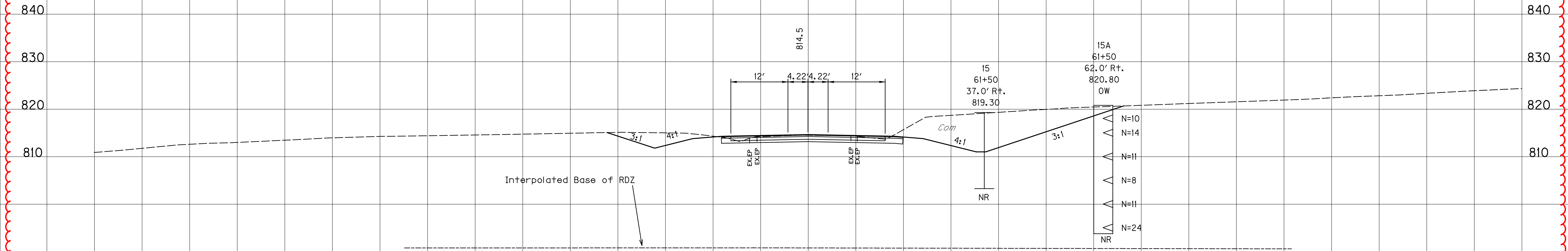
NOTE : NO STABILITY ANALYSIS DEEMED NECESSARY DUE TO SUBSURFACE CONDITIONS AND SLOPE CONFIGURATION.



66+50

Cut Limits from Sta. 60+50 to Sta. 63+00

NOTE : NO STABILITY ANALYSIS DEEMED NECESSARY DUE TO SUBSURFACE CONDITIONS AND SLOPE CONFIGURATION.



61+50

USER: PEC\_Jeff-C  
 DATE: 10/12/2011  
 FILE NAME: R12100GT.dgn  
 E-SHEET NAME: R12100GT.dgn

CONTRACT ID: 111343  
COUNTY: HARDIN  
PROPOSAL: JP02 047 NEW-ROUTE

PAGE: 1  
LETTING: 10/21/11  
CALL NO: 309

LINE NO	ITEM	DESCRIPTION	APPROXIMATE QUANTITY	UNIT	UNIT PRICE	AMOUNT
SECTION 0001		PAVING				
ALT GROUP AA1		ASPHALT ALTERNATE				
0010	00001	DGA BASE	95,410.000	TON		
0020	00013	LIME STABILIZED ROADBED	117,138.000	SQYD		
0030	00014	LIME	2,109.000	TON		
0040	00018	DRAINAGE BLANKET-TYPE II-ASPH	18,416.000	TON		
0050	00100	ASPHALT SEAL AGGREGATE	440.000	TON		
0060	00212	CL2 ASPH BASE 1.00D PG64-22	12,581.000	TON		
0070	00214	CL3 ASPH BASE 1.00D PG64-22	47,107.000	TON		
0080	00291	EMULSIFIED ASPHALT RS-2	53.000	TON		
0090	00301	CL2 ASPH SURF 0.38D PG64-22	2,658.000	TON		
0100	00307	CL2 ASPH SURF 0.38B PG64-22	642.000	TON		
0110	00358	ASPHALT CURING SEAL	117.000	TON		
0120	02200	ROADWAY EXCAVATION	484,018.000	CUYD		
0130	02223	GRANULAR EMBANKMENT	4,185.000	CUYD		
0140	02599	FABRIC-GEOTEXTILE TYPE IV	26,650.000	SQYD		
0150	02702	SAND FOR BLOTTER	292.000	TON		
0160	10203ND	PAVEMENT ADJUSTMENT (ASPHALT)	( 1.00)	LS	589,633.00	589,633.00
0170	22906ES403	CL3 ASPH SURF 0.38A PG64-22	6,716.000	TON		
SECTION 0002		PAVING				
ALT GROUP AA2		CONCRETE ALTERNATE WITH CONCRETE SHOULDERS				
0180	00001	DGA BASE	89,700.000	TON		
0190	00013	LIME STABILIZED ROADBED	121,224.000	SQYD		

CONTRACT ID: 111343  
COUNTY: HARDIN  
PROPOSAL: JP02 047 NEW-ROUTE

PAGE: 2  
LETTING: 10/21/11  
CALL NO: 309

LINE NO	ITEM	DESCRIPTION	APPROXIMATE QUANTITY	UNIT	UNIT PRICE	AMOUNT
0200	00014	LIME	2,183.000	TON		
0210	00018	DRAINAGE BLANKET-TYPE II-ASPH	18,611.000	TON		
0220	00100	ASPHALT SEAL AGGREGATE	440.000	TON		
0230	00212	CL2 ASPH BASE 1.00D PG64-22	8,354.000	TON		
0240	00291	EMULSIFIED ASPHALT RS-2	53.000	TON		
0250	00301	CL2 ASPH SURF 0.38D PG64-22	897.000	TON		
0260	00307	CL2 ASPH SURF 0.38B PG64-22	642.000	TON		
0270	00358	ASPHALT CURING SEAL	121.000	TON		
0280	02073	JPC PAVEMENT-9 IN	89,053.000	SQYD		
0290	02078	JPC PAVEMENT-6 IN SHLD	25,621.000	SQYD		
0300	02082	JPC PAVEMENT-9 IN SHLD	8,634.000	SQYD		
0310	02200	ROADWAY EXCAVATION	480,651.000	CUYD		
0320	02702	SAND FOR BLOTTER	304.000	TON		
0330	10203ND	PAVEMENT ADJUSTMENT (CONCRETE)	( 1.00)	LS	301,335.00	301,335.00
0340	24276EC	SUBGRADE REINFORCEMENT	13,325.000	SQYD		
SECTION 0003		PAVING				
ALT GROUP AA3		CONCRETE ALTERNATE WITH ASPHALT SHOULDERS				
0350	00001	DGA BASE	92,095.000	TON		
0360	00013	LIME STABILIZED ROADBED	111,224.000	SQYD		
0370	00014	LIME	2,183.000	TON		
0380	00018	DRAINAGE BLANKET-TYPE II-ASPH	18,611.000	TON		
0390	00100	ASPHALT SEAL AGGREGATE	440.000	TON		

CONTRACT ID: 111343  
COUNTY: HARDIN  
PROPOSAL: JP02 047 NEW-ROUTE

PAGE: 3  
LETTING: 10/21/11  
CALL NO: 309

LINE NO	ITEM	DESCRIPTION	APPROXIMATE QUANTITY	UNIT	UNIT PRICE	AMOUNT
0400	00212	CL2 ASPH BASE 1.00D PG64-22	12,592.000	TON		
0410	00214	CL3 ASPH BASE 1.00D PG64-22	1,931.000	TON		
0420	00291	EMULSIFIED ASPHALT RS-2	53.000	TON		
0430	00301	CL2 ASPH SURF 0.38D PG64-22	2,658.000	TON		
0440	00307	CL2 ASPH SURF 0.38B PG64-22	642.000	TON		
0450	00358	ASPHALT CURING SEAL	121.000	TON		
0460	02073	JPC PAVEMENT-9 IN	89,053.000	SQYD		
0470	02200	ROADWAY EXCAVATION	480,928.000	CUYD		
0480	02702	SAND FOR BLOTTER	304.000	TON		
0490	10203ND	PAVEMENT ADJUSTMENT (CONCRETE)	( 1.00)	LS	301,335.00	301,335.00
0500	22906ES403	CL3 ASPH SURF 0.38A PG64-22	594.000	TON		
0510	24276EC	SUBGRADE REINFORCEMENT	13,325.000	SQYD		
SECTION 0004 ROADWAY						
0520	00078	CRUSHED AGGREGATE SIZE NO 2	95.000	TON		
0530	01000	PERFORATED PIPE-4 IN	32,751.000	LF		
0540	01010	NON-PERFORATED PIPE-4 IN	4,844.000	LF		
0550	01020	PERF PIPE HEADWALL TY 1-4 IN	22.000	EACH		
0560	01024	PERF PIPE HEADWALL TY 2-4 IN	5.000	EACH		
0570	01028	PERF PIPE HEADWALL TY 3-4 IN	65.000	EACH		
0580	01032	PERF PIPE HEADWALL TY 4-4 IN	3.000	EACH		
0590	01740	CORED HOLE DRAINAGE BOX CON-4 IN	34.000	EACH		



CONTRACT ID: 111343  
COUNTY: HARDIN  
PROPOSAL: JP02 047 NEW-ROUTE

PAGE: 4  
LETTING: 10/21/11  
CALL NO: 309

LINE NO	ITEM	DESCRIPTION	APPROXIMATE QUANTITY	UNIT	UNIT PRICE	AMOUNT
0600	01895	VALLEY GUTTER	1,041.000	LF		
0610	01982	DELINEATOR FOR GUARDRAIL-WHITE	10.000	EACH		
0620	02014	BARRICADE-TYPE III	10.000	EACH		
0630	02091	REMOVE PAVEMENT	670.000	SQYD		
0640	02159	TEMP DITCH	14,875.000	LF		
0650	02160	CLEAN TEMP DITCH	14,875.000	LF		
0660	02223	GRANULAR EMBANKMENT	3,490.000	CUYD		
0670	02242	WATER	1.000	MGAL		
0680	02262	FENCE-WOVEN WIRE TYPE 1	26,500.000	LF		
0690	02360	GUARDRAIL TERMINAL SECTION NO 1	7.000	EACH		
0700	02369	GUARDRAIL END TREATMENT TYPE 2A	8.000	EACH		
0710	02373	GUARDRAIL END TREATMENT TYPE 3	2.000	EACH		
0720	02391	GUARDRAIL END TREATMENT TYPE 4A	6.000	EACH		
0730	02429	RIGHT-OF-WAY MONUMENT TYPE 1	204.000	EACH		
0740	02432	WITNESS POST	3.000	EACH		
0750	02475	PLUG WATER WELL	6.000	EACH		
0760	02483	CHANNEL LINING CLASS II	1,149.000	TON		
0770	02484	CHANNEL LINING CLASS III	329.000	TON		
0780	02545	CLEARING AND GRUBBING (103 ACRES)	( 1.00)	LS		
0790	02562	SIGNS	261.000	SQFT		
0800	02585	EDGE KEY	173.000	LF		

CONTRACT ID: 111343  
COUNTY: HARDIN  
PROPOSAL: JP02 047 NEW-ROUTE

PAGE: 5  
LETTING: 10/21/11  
CALL NO: 309

LINE NO	ITEM	DESCRIPTION	APPROXIMATE QUANTITY	UNIT	UNIT PRICE	AMOUNT
0810	02599	FABRIC-GEOTEXTILE TYPE IV	5,150.000	SQYD		
0820	02600	FABRIC GEOTEXTILE TY IV FOR PIPE	19,546.000	SQYD	2.00	39,092.00
0830	02650	MAINTAIN & CONTROL TRAFFIC	( 1.00)	LS		
0840	02671	PORTABLE CHANGEABLE MESSAGE SIGN	2.000	EACH		
0850	02690	SAFELOADING	8.000	CUYD		
0860	02701	TEMP SILT FENCE	14,875.000	LF		
0870	02703	SILT TRAP TYPE A	94.000	EACH		
0880	02704	SILT TRAP TYPE B	94.000	EACH		
0890	02705	SILT TRAP TYPE C	94.000	EACH		
0900	02706	CLEAN SILT TRAP TYPE A	282.000	EACH		
0910	02707	CLEAN SILT TRAP TYPE B	282.000	EACH		
0920	02708	CLEAN SILT TRAP TYPE C	282.000	EACH		
0930	02709	CLEAN TEMP SILT FENCE	14,875.000	LF		
0950	02726	STAKING	( 1.00)	LS		
0960	05950	EROSION CONTROL BLANKET	40,285.000	SQYD		
0970	05952	TEMP MULCH	454,960.000	SQYD		
0980	05953	TEMP SEEDING AND PROTECTION	30,492.000	SQYD		
0990	05966	TOPDRESSING FERTILIZER	16.000	TON		
1000	05985	SEEDING AND PROTECTION	304,920.000	SQYD		
1010	05989	SPECIAL SEEDING CROWN VETCH	24,196.000	SQYD		
1020	05990	SODDING	1,294.000	SQYD		

CONTRACT ID: 111343  
COUNTY: HARDIN  
PROPOSAL: JP02 047 NEW-ROUTE

PAGE: 6  
LETTING: 10/21/11  
CALL NO: 309

LINE NO	ITEM	DESCRIPTION	APPROXIMATE QUANTITY	UNIT	UNIT PRICE	AMOUNT
1030	06510	PAVE STRIPING-TEMP PAINT-4 IN	17,524.000	LF		
1040	06514	PAVE STRIPING-PERM PAINT-4 IN	90,693.000	LF		
1050	06567	PAVE MARKING-THERMO STOP BAR-12IN	232.000	LF		
1060	06568	PAVE MARKING-THERMO STOP BAR-24IN	96.000	LF		
1070	06574	PAVE MARKING-THERMO CURV ARROW	29.000	EACH		
1080	21802EN	G/R STEEL W BEAM-S FACE (7 FT POST)	9,443.750	LF		
1090	23131ER701	PIPELINE VIDEO INSPECTION	2,630.000	LF		
1100	23274EN11F	TURF REINFORCEMENT MAT 1	12,527.000	SQYD		
1110	23791EC	PAVE STRIPING-CHEVRON MARKINGS	3,956.000	SQFT		
SECTION 0005 DRAINAGE						
1120	00440	ENTRANCE PIPE-15 IN	244.000	LF		
1130	00441	ENTRANCE PIPE-18 IN	104.000	LF		
1140	00445	ENTRANCE PIPE-30 IN	30.000	LF		
1150	00461	CULVERT PIPE-15 IN	235.000	LF		
1160	00462	CULVERT PIPE-18 IN	1,038.000	LF		
1170	00464	CULVERT PIPE-24 IN	759.000	LF		
1180	00466	CULVERT PIPE-30 IN	659.000	LF		
1190	00468	CULVERT PIPE-36 IN	359.000	LF		
1200	00471	CULVERT PIPE-54 IN	231.000	LF		
1210	00472	CULVERT PIPE-60 IN	170.000	LF		
1220	00498	CULVERT PIPE-42 IN EQUIV	130.000	LF		

CONTRACT ID: 111343  
COUNTY: HARDIN  
PROPOSAL: JP02 047 NEW-ROUTE

PAGE: 7  
LETTING: 10/21/11  
CALL NO: 309

LINE NO	ITEM	DESCRIPTION	APPROXIMATE QUANTITY	UNIT	UNIT PRICE	AMOUNT
1230	00521	STORM SEWER PIPE-15 IN	583.000	LF		
1240	00522	STORM SEWER PIPE-18 IN	915.000	LF		
1250	00524	STORM SEWER PIPE-24 IN	127.000	LF		
1260	00528	STORM SEWER PIPE-36 IN	122.000	LF		
1270	01416	METAL END SECTION TY 4-42 IN	2.000	EACH		
1280	01432	SLOPED BOX OUTLET TYPE 1-15 IN	5.000	EACH		
1290	01433	SLOPED BOX OUTLET TYPE 1-18 IN	5.000	EACH		
1300	01434	SLOPED BOX OUTLET TYPE 1-24 IN	6.000	EACH		
1310	01450	S & F BOX INLET-OUTLET-18 IN	4.000	EACH		
1320	01451	S & F BOX INLET-OUTLET-24 IN	2.000	EACH		
1330	01452	S & F BOX INLET-OUTLET-30 IN	6.000	EACH		
1340	01453	S & F BOX INLET-OUTLET-36 IN	2.000	EACH		
1350	01490	DROP BOX INLET TYPE 1	2.000	EACH		
1360	01496	DROP BOX INLET TYPE 3	1.000	EACH		
1370	01505	DROP BOX INLET TYPE 5B	21.000	EACH		
1380	01541	DROP BOX INLET TYPE 10	2.000	EACH		
1390	01580	DROP BOX INLET TYPE 15	5.000	EACH		
1400	08100	CONCRETE-CLASS A	81.280	CUYD		
1410	08150	STEEL REINFORCEMENT	4,532.000	LB		
SECTION 0006 MOBILIZATION / DEMOBILIZATION						
1420	02568	MOBILIZATION (NO MORE THAN 5%)		LUMP		



CONTRACT ID: 111343  
COUNTY: HARDIN  
PROPOSAL: JP02 047 NEW-ROUTE

PAGE: 8  
LETTING: 10/21/11  
CALL NO: 309

LINE NO	ITEM	DESCRIPTION	APPROXIMATE QUANTITY	UNIT	UNIT PRICE	AMOUNT
1430	02569	DEMOBILIZATION (AT LEAST 1.5%)		LUMP		
		TOTAL BID				